

CERTIFIED INSULATION ENERGY APPRAISALS

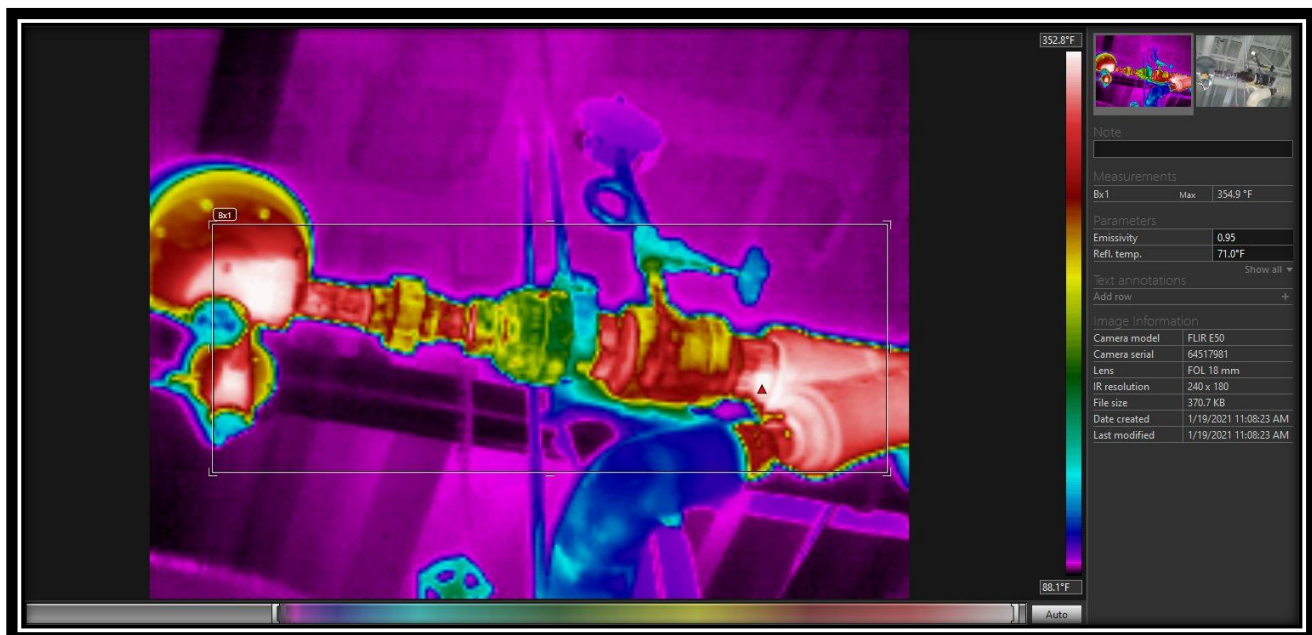
Thermal insulation is one of the most effective ways to reduce energy usage, operating expenses, and your company's carbon footprint. *Fit Tight Covers* can help determine your facility's potential cost savings with a Certified Insulation Energy Appraisal. The appraisal includes personnel interviews, data collection, thermal imaging, and a report detailing current state, proposed insulation upgrades, and payback period with potential energy savings.

HOW IT WORKS

1. One of Fit Tight Cover's *certified appraisers* will visit your facility to gather data on the insulated and uninsulated piping, ductwork, and mechanical equipment. Interviews will be conducted to determine current energy and maintenance costs, as well as, energy-savings goals.
2. Using industry-specific software, the appraiser will determine actual Btu losses and emissions for each audited system and piece of equipment.
3. A final report will document current state, recommend solutions, and show the CO2 emissions and potential for savings on each unique line item. The report will also provide an exact ROI (return on investment) for your upgrades, which is typically less than 6 months.

THERMAL IMAGING

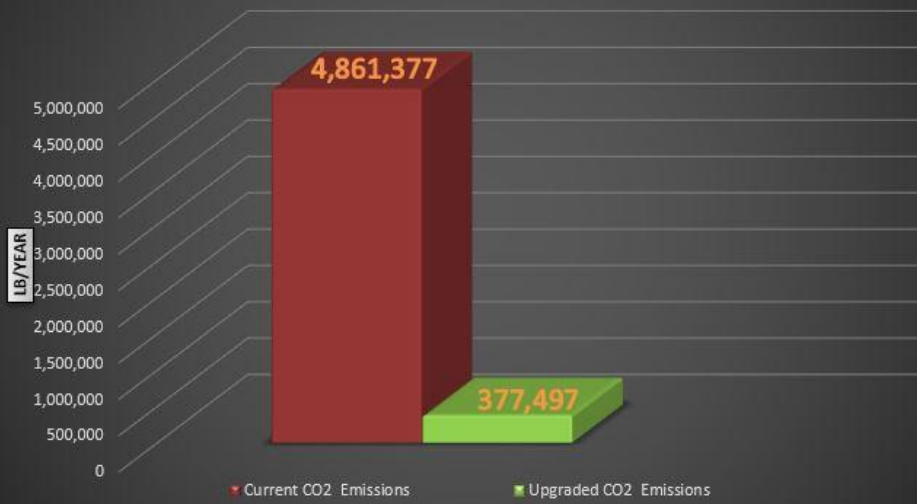
Our certified appraisals include thermal images of your facility's piping systems and mechanical equipment. With our FLIR camera, we are able to find deteriorated or improperly installed insulation not visible to the naked eye. These images show gaps or voids where energy is being lost.



OUR CERTIFIED APPRAISERS

- Calvin Brasel *General Manager* cbrasel@fittightcovers.com
- Jacob Jordan *Field Services* jjordan@fittightcovers.com
- Joe Mlachak *Nat'l Sales Manager* jmlachak@fittightcovers.com

CO₂ Emissions Per Year



insulation
energy
APPRAISAL

PIPE INSULATION

greenhouse gas emissions

energy savings
Btu losses

A collage of images related to industrial energy efficiency. It includes a technical drawing of a pipe with insulation, a photograph of a worker in a blue hard hat and safety glasses inspecting a green pipe, and several photographs of industrial piping systems. Text overlays include 'insulation energy APPRAISAL', 'PIPE INSULATION', 'greenhouse gas emissions', 'energy savings', and 'Btu losses'. A world map is visible in the bottom right corner.